

# A SU AMOR, ALLÍ

Luis Alberto Spinetta  
(Transc.: Jorge Meleri)

## INTRO (VAMP)

Em<sup>11</sup>

A

Em<sup>7</sup> D<sup>#dim7</sup> Am<sup>7</sup> Em<sup>7</sup>

Em<sup>7</sup> F<sup>#dim7</sup> Am<sup>7</sup>/C Amaj<sup>7</sup>/B

Em<sup>7</sup> Am<sup>7</sup> Em<sup>7</sup> C<sup>9</sup> D<sup>7</sup>

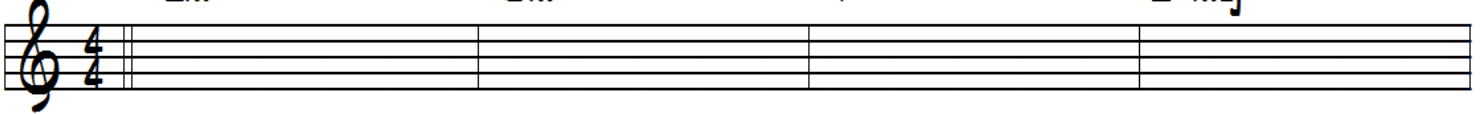
B

Cm<sup>7</sup> Cm<sup>7</sup> F Ebmaj<sup>7</sup>

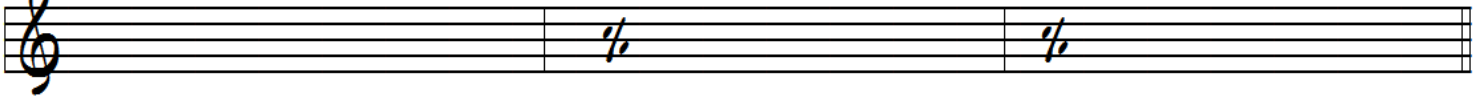
D Bb<sup>+</sup>

(REPITE) A

B' Cm7 Gm7 F Ebmaj7



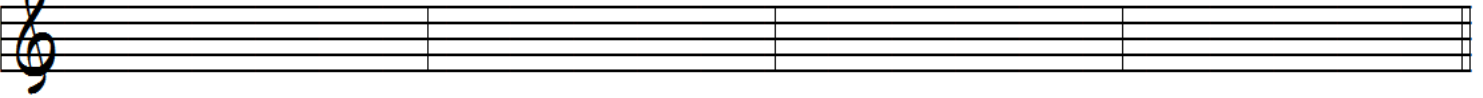
Bb+



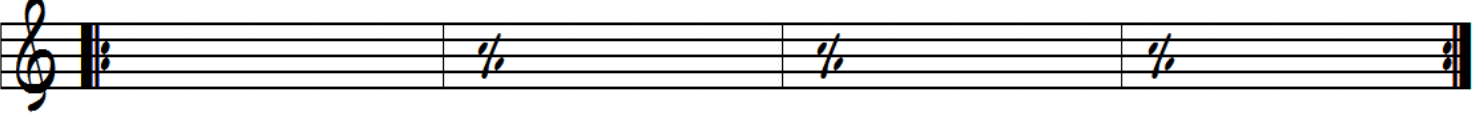
C Gmaj7 Cmaj7 F# D B7 Em7



Gmaj7 Dmaj7 Cmaj7 Am7



INTER D6



(REPITE) INTRO (VAMP)

(REPITE) A

B'' Cm7 Gm7 F Ebmaj7



D7 Dm7



(REPITE) C

(REPITE) INTER (FADE OUT)